



**LET'S MARK IT!**



**CODING AND MARKING SOLUTIONS**

# ABOUT RN MARK

**RN Mark Inc**, a Canadian manufacturer based out of Richmond Hill - Ontario, was established in 2002. Since then, our engineers and dedicated team have strived to create top-shelf machines that fit seamlessly into any line, keeping costs down and production moving. For **over 20 years**, we've had the pleasure of designing and providing high performance, and affordable industrial inkjet printers.

Our RN Mark user-friendly software is capable of printing the following data on practically any surface you need including Static text, Auto date & time, Julian date, Jalali date, Auto manufacture date, Auto expiry date, Batch number, Logo, Image, QR code, Serial number, Auto shift codes, GS1 Data Matrix, UDI, Database, Counter, External text (weight & other info from scale and barcode scanner)



## Print Speed

Our printers could print up to 180 m/min; keeping up with your production line while maintaining superior print quality.



## Canadian Quality

We are a proudly Canadian company; our machines are designed and fully manufactured by our skilled team of technicians in Ontario.



## Print Height

Up to 144mm in height using a large character machine with stitched heads; variety of colors available.



## Resolution

Our machines maintain top-shelf resolution up to 600 dpi when printing on practically any material, porous or non-porous.



Bi-color printing with two heads

**Make your brand STAND OUT  
with RNJet Printers!**

# RNJET H SERIES

**NO** ERRORS  
DOWNTIME  
MAINTENANCE



RNJET H1+



RNJET H2+

## STANDARD FEATURES

Display	7" touchscreen LCD controller	
No. of Print Heads	1	2
Printing Speed	up to 180 m/min (150 dpi) or up to 90 m/min (300 dpi) or up to 45 m/min (600 dpi)	
Max. Print Height	up to 12.7 mm	up to 25 mm
Printing Distance	up to 8mm	
Printing Orientation	Side printing, downwards, at an angle	
Min. Drying Time for non-porous material	1 to 3 seconds, depending on material	
Min. Drying Time for porous material	N/A	
Max. Printing Length (non-stop)	up to 5500 mm	up to 4400 mm
<b>WARRANTY</b>	<b><u>3 YEARS*</u></b>	

## INK AND OPERATING CONDITIONS

Ink System	Cartridge
Ink Management	Ink calculator and ink level indicator on controller & printdriver, output for optional ink beacon alarm
Ink Colors	Red, blue, black, pigmented white and yellow, USDA-approved FDG ink, as well as UV black and UV white
Ink Types	Variety of solvent-based, water-based and food-grade inks
Operating Conditions	Temp: 0°C - 45°C Relative Humidity: 20% - 80%

## RNJET EP-6H+

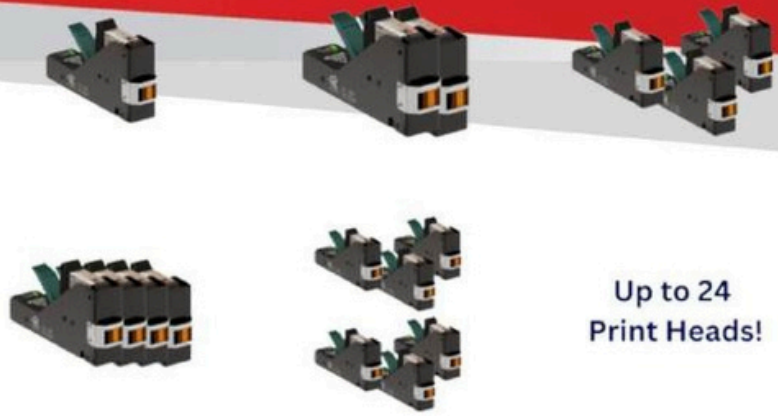
- Ideal for egg printing
- Up to 12.7 mm (1/2") height
- Up to 6 heads
- USDA-approved ink
- Print up to 130,000 eggs/hour or 30 eggs/second
- Food Grade Ink available in Dark Pink, Blue and Green








\* Terms and conditions apply.  
Check Refund and Return Policy at  
[www.rnmark.com](http://www.rnmark.com)



# RNJET H SERIES



Up to 24  
Print Heads!

Feature Comparison	RNJet H3+	RNJet H4+	RNJet H6+	RNJet H24+
				
<b>Technology</b>	Thermal Inkjet	Thermal Inkjet	Thermal Inkjet	Thermal Inkjet
<b>Ink System</b>	Cartridge	Cartridge	Cartridge	Cartridge
<b>No. of Print Heads</b>	3	4	6	24
<b>Max. Print Height</b>	up to 12.7 mm (each head)	up to 12.7 mm (each printhead) up to 50 mm (4 printheads stitched)	up to 12.7 mm (each printhead)	up to 12.7 mm (each printhead)
<b>Printing Distance</b>	up to 8 mm	up to 8 mm each heads or up to 3 mm stitched head	up to 8 mm	up to 8 mm
<b>Printing Speed</b>	150 dpi up to 180 m/min 300 dpi up to 90 m/min 600 dpi up to 45 m/min	150 dpi up to 180 m/min 300 dpi up to 90 m/min 600 dpi up to 45 m/min	150 dpi up to 180 m/min 300 dpi up to 90 m/min 600 dpi up to 45 m/min	150 dpi up to 180 m/min 300 dpi up to 90 m/min 600 dpi up to 45 m/min
<b>Ink Types</b>	For Porous: Water Based/Solvent Based For Non-Porous: Solvent Based	For Porous: Water Based/Solvent Based For Non-Porous: Solvent Based	For Porous: Water Based/Solvent Based For Non-Porous: Solvent Based	For Porous: Water Based/Solvent Based For Non-Porous: Solvent Based
<b>Ink Drying Time for Non-Porous Material</b>	1 to 3 seconds	1 to 3 seconds	1 to 3 seconds	1 to 3 seconds
<b>Communication</b>	TCP/IP, RS232 for database, barcode scanners, Ethernet, USB	TCP/IP, RS232 for database, barcode scanners, Ethernet, USB	TCP/IP, RS232 for database, barcode scanners, Ethernet, USB	TCP/IP, RS232 for database, barcode scanners, Ethernet, USB
<b>Free Technical Support</b>	✓	✓	✓	✓
<b>Maintenance Free</b>	✓	✓	✓	✓
<b>7" Touch Screen Controller</b>	✓	✓	✓	✓
<b>Windows Based Software</b>	✓	✓	✓	✓
<b>Text, Barcode, Graphics, LOGO, Database Coding</b>	✓	✓	✓	✓
<b>High-Speed Serialisation</b>	✓	✓	✓	✓



# RNJET HI-RES SMALL CHARACTER

**ALTERNATIVE  
TO CIJ  
RELIABLE  
ECONOMICAL**

**RNJET 100**



**RNJET 200**



**RNJET 100+**



**RNJET 200+**



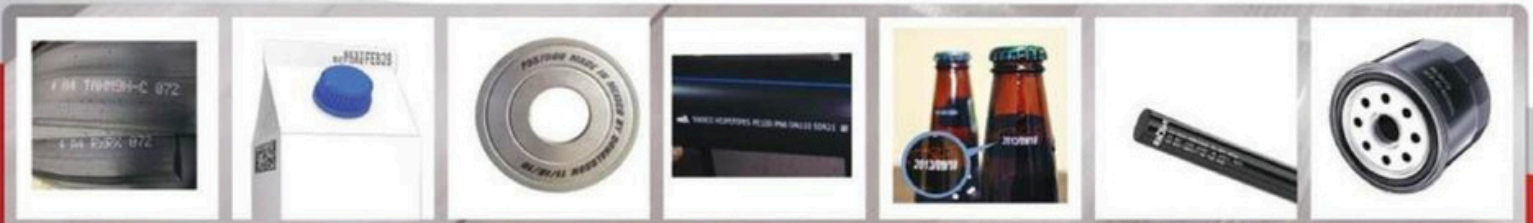
## STANDARD FEATURES

Display	7" touchscreen LCD controller			
No. of Print Heads	1	2	1	2
Printing Speed	up to 40 m/min (180 dpi) or up to 60 m/min (100 dpi)			
Max. Print Height	up to 18 mm	up to 36 mm	up to 18 mm	up to 36 mm
Printing Distance	up to 15 mm			
Printing Orientation	Side printing, downwards, upwards, at an angle			
Min. Drying Time for non-porous material	10 to 15 seconds, depending on material			
Min. Drying Time for porous material	N/A			
Max. Printing Length (non-stop)	up to 9200 mm			
Warranty	1 Year*			

## INK AND OPERATING CONDITIONS

Ink System	Cartridge-Based (110 ml cartridge)	Motorized bulk-based system (490 ml bottle)
Ink Management	Ink calculator, low ink indicator on controller, output for optional ink beacon alarm	
Ink Colors	Red, blue, black, pigmented white and yellow, food-grade red and blue, as well as UV black and UV white	Red, blue, black, food-grade red and blue, as well as UV black
Ink Types	Solvent-based, oil-based and food-grade inks	
Operating Conditions	Temp: 0°C - 45°C; Special ink: -5°C - 45°C Relative Humidity: 20% - 80%	

\* Terms and conditions apply. Check Refund and Return Policy at [www.rnmark.com](http://www.rnmark.com)



# RNJET HI-RES LARGE CHARACTER



STANDARD FEATURES				
Display	7" touchscreen LCD controller			
No. of Print Heads	1	2	1	2
Printing Speed	up to 60 m/min (180 dpi) or up to 90 m/min (100 dpi)			
Max. Print Height	up to 72 mm	up to 144 mm	up to 72 mm	up to 144 mm
Printing Distance	up to 15 mm			
Printing Orientation	Side printing, downwards, upwards, at an angle			
Min. Drying Time for non-porous material	10 to 15 seconds, depending on material			
Min. Drying Time for porous material	N/A			
Max. Printing Length (non-stop)	up to 4600 mm	up to 2300 mm	up to 4600 mm	up to 2300 mm
Warranty	1 Year*			

INK AND OPERATING CONDITIONS		
Ink System	Cartridge-Based (110 ml cartridge)	Motorized bulk-based system (490 ml bottle)
Ink Management	Ink calculator, low ink indicator on controller, output for optional ink beacon alarm	
Ink Colors	Red, blue, black, pigmented white and yellow, food-grade red and blue, as well as UV black and UV white	Red, blue, black, food-grade red and blue, as well as UV black
Ink Types	Solvent-based, oil-based and food-grade inks	
Operating Conditions	Temp: 0°C - 45°C; Special ink: -5°C - 45°C Relative Humidity: 20% - 80%	

\* Terms and conditions apply. Check Refund and Return Policy at [www.rnmark.com](http://www.rnmark.com)



# TRACK AND TRACE SOLUTIONS



## Optional Vision Inspection Solutions for Marking & Coding Quality

We are proud to offer full-featured, powerful vision systems which perform fast, accurate inspections of every product marking that passes through your production line.

These systems help to ensure quality and compliance by checking the print quality, position readability and accuracy of codes.

This works by obtaining serial number information from the company or manufacturing server. Each object is marked with an encoded, unique serial number using a Data Matrix. A sophisticated vision system consisting of multiple cameras verifies the quality of the markings, and an integrated reject system reliably removes failed items from the production line.



Loftware  
**NiceLabel**

We are glad to announce that with cooperation between **RN Mark** and **NiceLabel** software team, we could offer our clients opportunities to use RNJet printers with NiceLabel software. Simply download the driver.



# SOFTWARE & NETWORK ABILITIES

DESCRIPTION	PRINT SAMPLES
Linear Bar Codes (EAN, ITF-14, UPCA, GS1, Databar, and many more)	
2D Codes (QR, GS1 DataMatrix Standard, Dot Code, GS1 Databar-Stacked & Limited, MicroPDF and many more)	
Logos & Graphics (Print any image, logo, graphic or icon with Dither or Negativie)	
Specialty Fonts (Download any TTF Fonts such as Arial, Dot Font, and many more)	

## RN SOFTWARE

RNSoft allows up to 100 printers to be connected simultaneously to one PC through your network.



### SOFTWARE & NETWORK

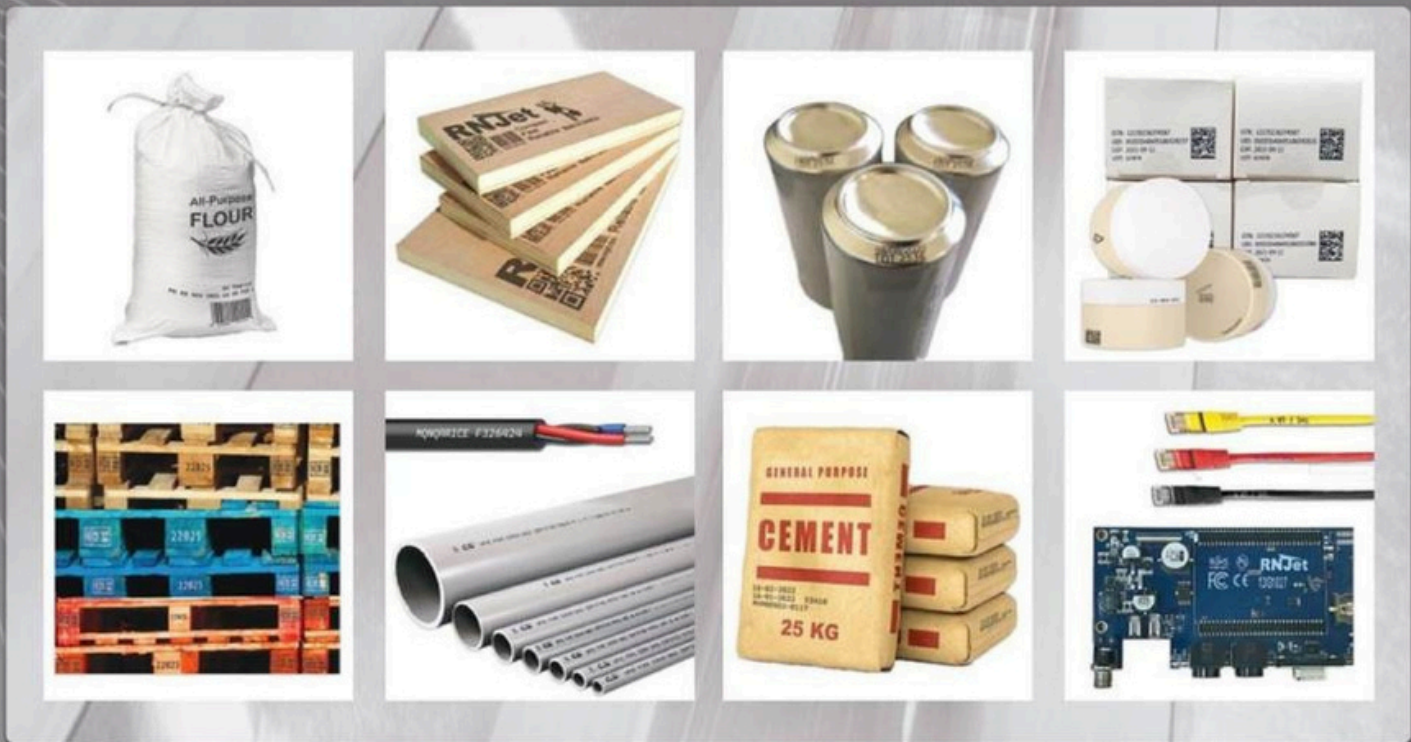
Internal Message Library	More than 1000 messages
Interface & Keyboard Languages	English, French, Spanish, Italian, Portuguese, Polish, German, Czech, Arabic, Farsi, Russian, and many more
Supported Database Format	CSV
Print Modes	Single & Continuous
Fonts	Ability to add any True Type font
Software	RN Software & free Windows-based RN Soft
Network	Ability to add up to 100 printers on 1 PC

### DATA INPUT & EXTERNAL POWER SPECIFICATION

I/O Ports	Photocell, Shaft Encoder, Ethernet, RS-232, USB, RS 485, beacon alarm
External Power	Input : 100-240V 50/60 Hz Output : 12v-5.0A, 60W Max



# PRINTABLE SAMPLES



With RN Mark's inline solutions, it's easy and cost-effective to mark your product, whether it's metal or fiberglass material, plastic or cloth pleated paper or PET recyclable plastic!

Consult with our specialist to get the right solution for your production line.



RN Mark Inc



RN Mark Inc



Made in CANADA



@rnmarkinc



@rnmarkinc



25-16 Sims Cres.  
Richmond Hill, ON  
L4B 2P1 Canada



+1 (416) 419 5512



info@rnmark.com  
www.rnmark.com



+1 (905) 597 4977